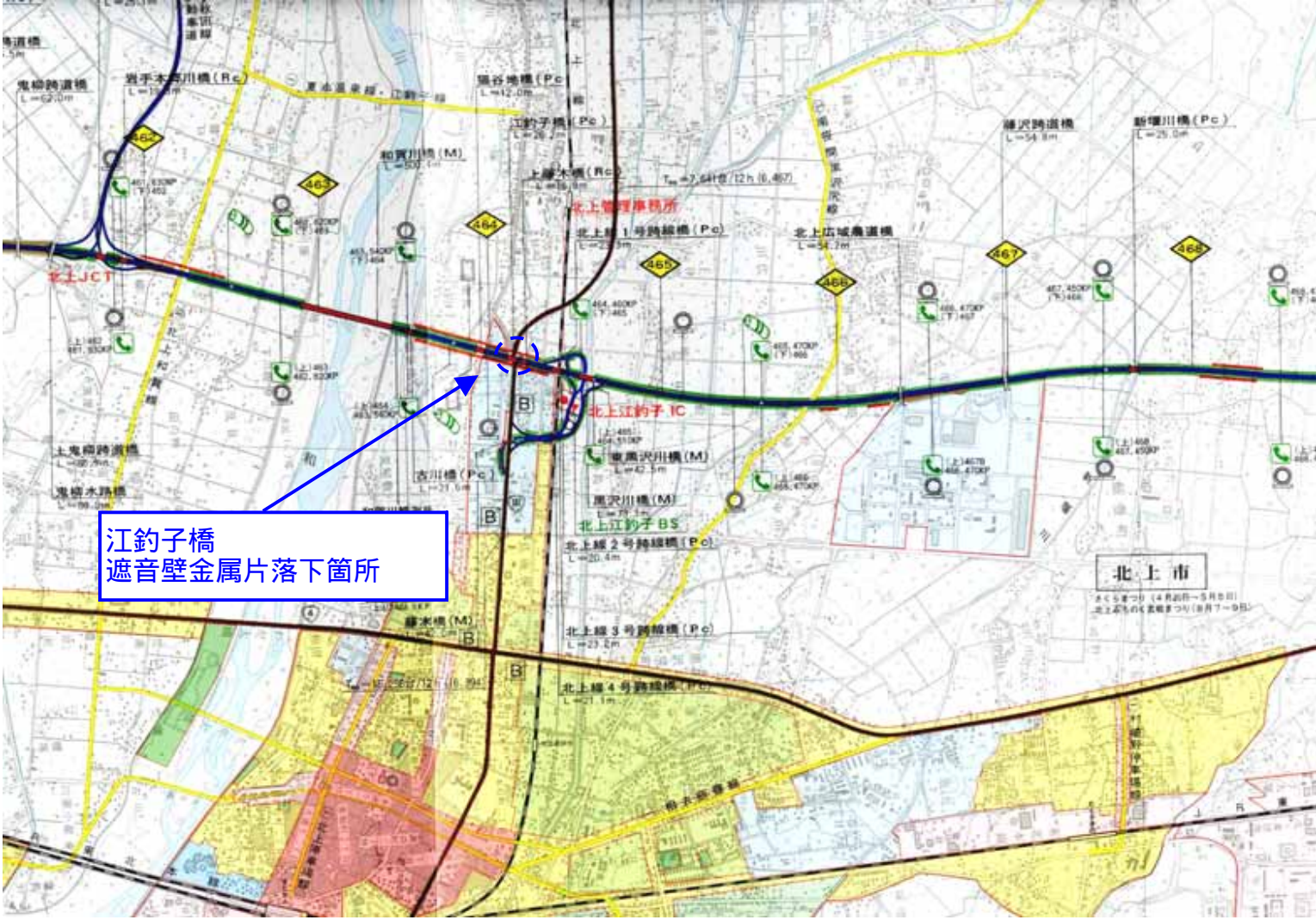
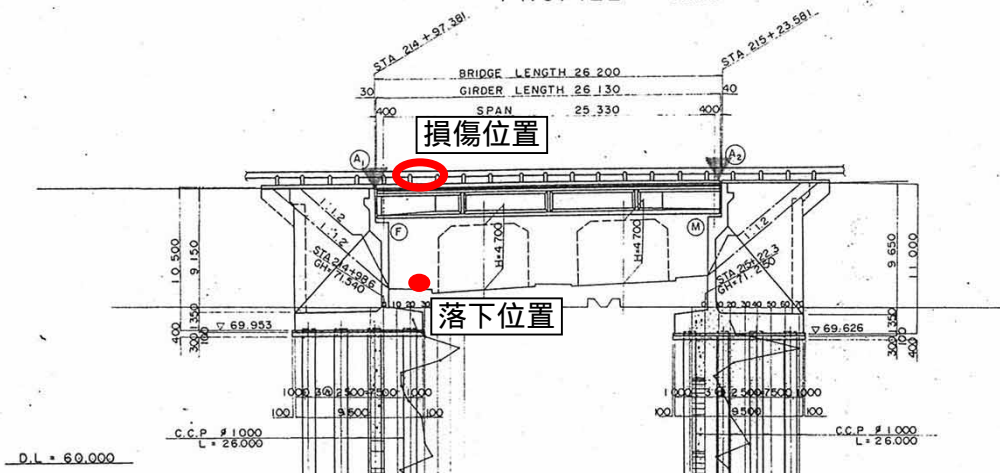


東北自動車道 北上金ヶ崎～北上江釣子間 江釣子橋位

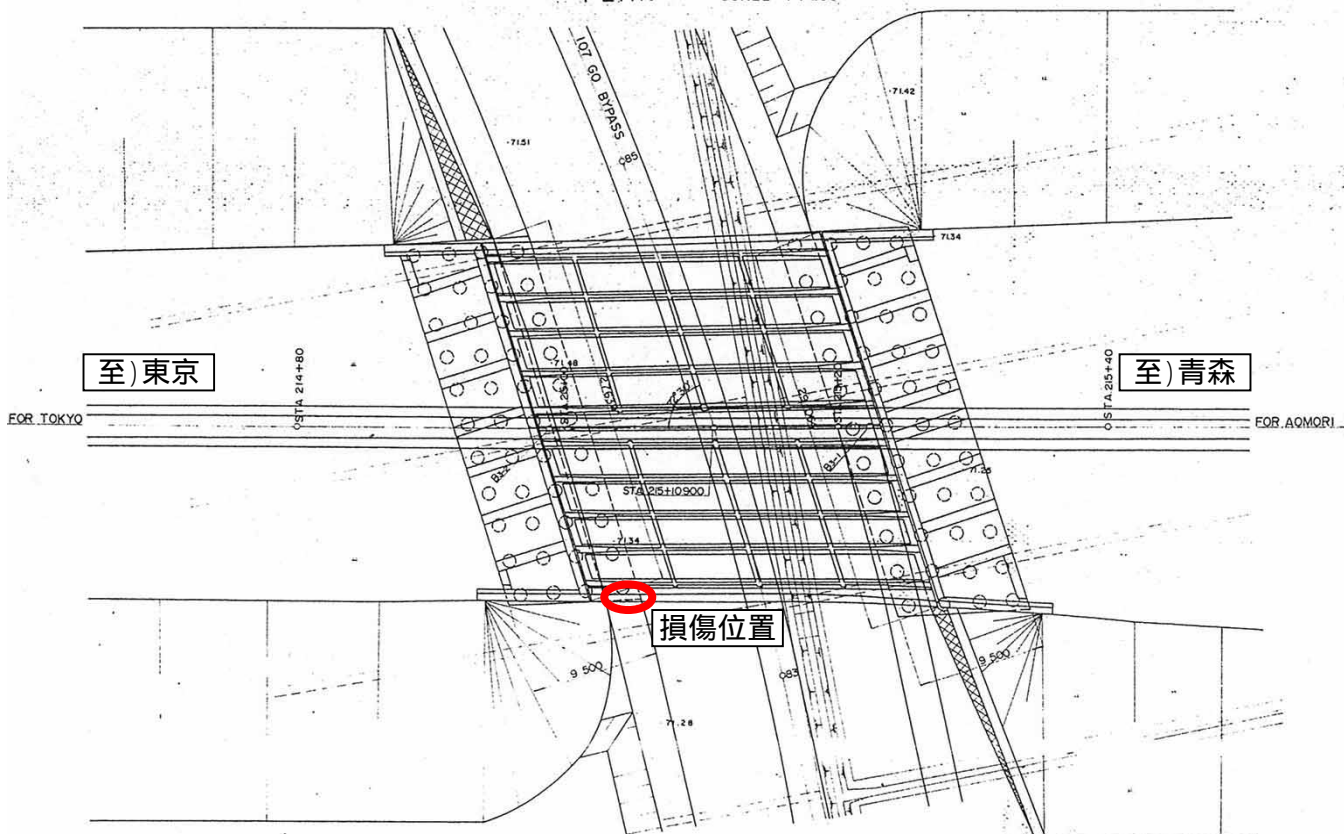


PROFILE SCALE 1:200

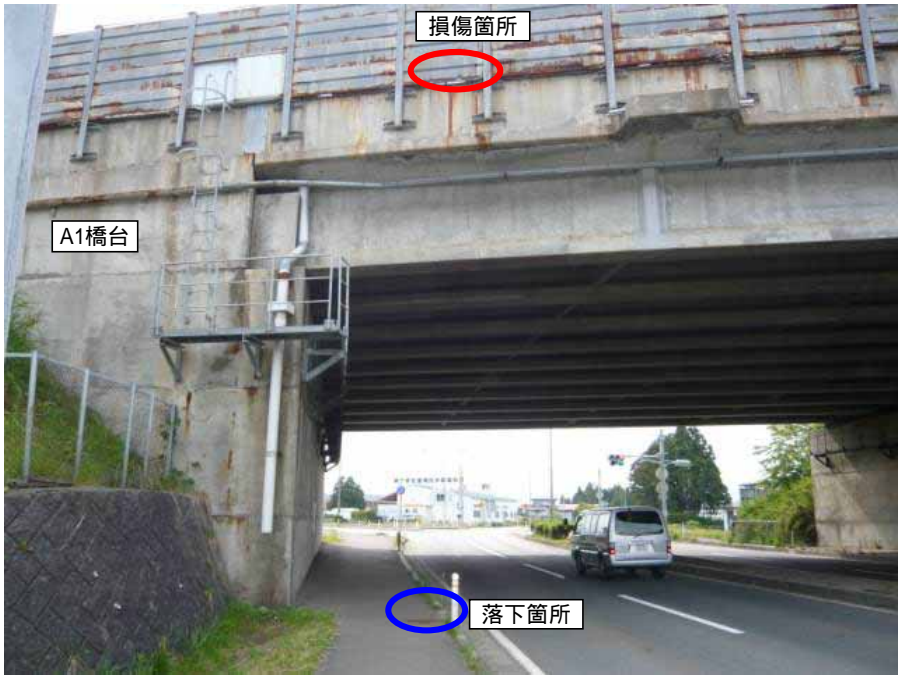


	214+00	217+00	220+00	223+00	226+00
PROPOSED HEIGHT					
GROUND HEIGHT	71.48	71.19	71.19	71.27	71.24
ACCUMULATIVE DISTANCE	2+460.000	2+497.000	2+510.000	2+523.000	2+540.000
DISTANCE	20.000	37.000	13.000	13.000	17.000
STATION	+ 80.00	+ 97.70	+ 109.90	+ 20.00	+ 40.00
CURVE BAND	R = ∞ L = 2 093.000				

PLAN SCALE 1:200



東北道 江釣子橋 遮音壁損傷による金属片落下状況



損傷箇所【拡大】



落下した金属片

